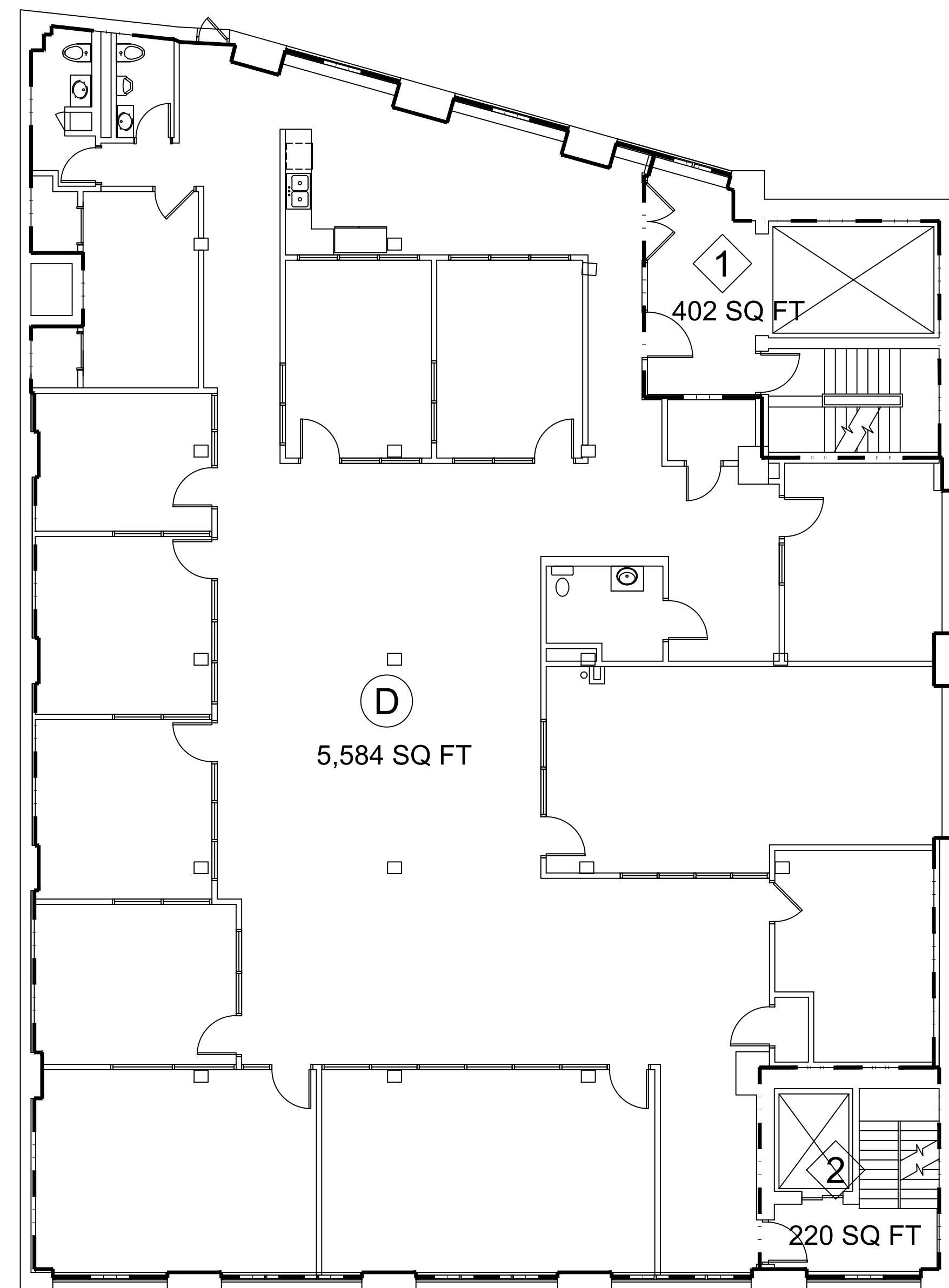
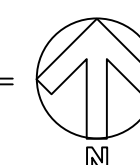


4TH FLOOR		
○	DESIGNATION	AREA
D	CUBII	5,584 S.F.
◇	DESIGNATION	AREA
1	STAIR	402 S.F.
2	STAIR	220 S.F.
TOTAL FLOOR		6,206 S.F.

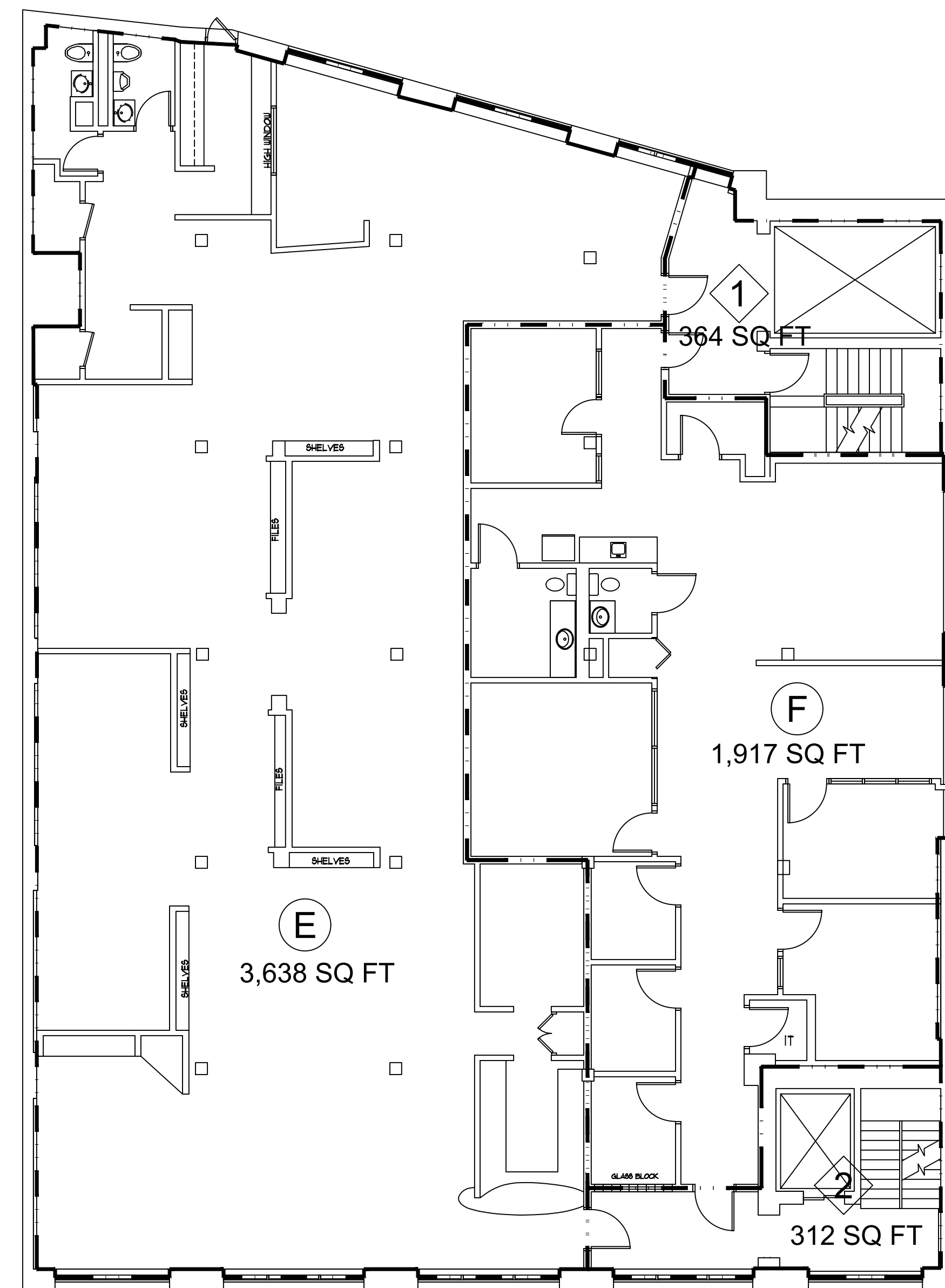


4TH FLOOR PLAN

SCALE: 1/8" = 1'-0"

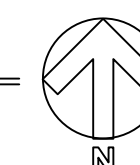


5TH FLOOR		
○	DESIGNATION	AREA
E	GTG	3,638 S.F.
F	EVOLVEHER	1,917 S.F.
◇	DESIGNATION	AREA
1	STAIR	312 S.F.
2	STAIR	364 S.F.
TOTAL FLOOR		6,231 S.F.



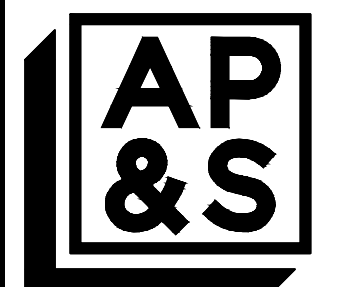
5TH FLOOR PLAN

SCALE: 1/8" = 1'-0"



LINE OF AREA DESIGNATION

TENANT LIST	
A - SPROUTS ACADEMY	
B - STR	
C - VACANT	
D - CUBII	
E - GTG	
F - EVOLVEHER	
G - EVED	
H - BAKER	
I - WEINSTEIN	
J - PROPER SUIT	
K - NURTURE LIFE	
L - PCF	
M - PRODIGIOUS	
N - DOSE	
O - BARRY	



ARCHITECTURAL PLANNING & SERVICES, LTD.  
123 W. Front St. Suite 202  
Wheaton, Illinois 60187  
TEL: 630-665-0355  
FAX: 630-665-3022  
www.APSarchitects.com

CONSULTANTS

PROJECT

EXISTING PLANS  
350 W. ONTARIO STREET  
CHICAGO, ILLINOIS

STAMP

MARK	DATE	DESCRIPTION
	8/9/19	ISSUED FOR REVIEW

PROJECT NO: 19-013  
DRAWN BY: MC, LM  
CHK'D BY: SHS

COPYRIGHT 2019 BY ARCHITECTURAL PLANNING & SERVICES, LTD. THE ATTACHED DRAWINGS ARE PROTECTED UNDER THE COPYRIGHT LAWS OF THE UNITED STATES AND ARE TO BE USED FOR REVIEW OR BOOKING OR CONSTRUCTION AS DEFINED IN THE CONTRACT BETWEEN THE ARCHITECT AND THE OWNER. THE ARCHITECT HAS NO MEANS OF ENSURING THAT THE DRAWINGS WILL NOT, OR HAVE NOT BEEN AFFECTED BY ANY FILE CONVERSION OR PRINTING PROCESS AND CANNOT THEREFORE BE RESPONSIBLE FOR THE CONTENTS. THESE DRAWINGS SHALL NOT BE USED BY A THIRD PARTY. ANY USE OR UNAUTHORIZED PRINTING AND/OR DISTRIBUTION OF THESE DRAWINGS WITHOUT PRIOR WRITTEN CONSENT FROM ARCHITECTURAL PLANNING & SERVICES, LTD. IS PROHIBITED AND CONSTITUTES A VIOLATION OF ARCHITECT'S COPYRIGHT.

SHEET TITLE  
EXISTING PLANS

EX3-A

SHEET OF